

&
6000 AND 8000

DIRECT VENT GAS FIREPLACES

HEAT & GLO



THE ORIGINAL
ACHIEVEMENT

6000 & 8000

The original achievement, made better over time. That's the history behind this flagship series from Heat & Glo. It started in the late 1980s as the DV88, gained popularity as the DV36 and then evolved into the award-winning 6000 and 8000 Series.

YOUR FIRE. YOUR WAY.

Select the features you want, from the model you need. Four models and two sizes provide flexibility to upgrade with different features.

Start with the C model for moderate heat and impressive flames. Move to the CL for upgraded accent lighting, a textured brick interior and wireless controls. Select the CLX for the ultimate fireside experience: vivid flames and the greatest heat output. Plus high definition logs, an illuminated ember bed and LED accent lighting. Or add a touch of Modern with a clean minimalistic look.



LEFT: 6000CLX shown with chateau
forge front and kenwood mantel

COVER: 8000CLX



Top: 8000 MODERN shown with modern front in black and crystal glass media
Left: 6000CL shown with galleria front in new bronze and mt. vernon mantel
Right: 8000CL shown with halston front in black

MODELS AVAILABLE

Choose a model to fit your space and style.

Model	BTUs	Viewing Width	Brick Refractory	Reflective Black Glass Interior	LED Accent Lights	LED Illuminated Embers	Premium Logset	50% Flame & Heat Turndown	100% Turndown (Via Accent Lighting)	AFUE Heater Rated	Fan (160 cfm)	IntelliFire Plus RC300 Wireless Control
6000CLX	40,000	36"	•		•	•	•	•	•	•	•	•
6000CL	35,000	36"	•		•			•	•	•		•
6000C	30,000	36"						•				
6000 MODERN	28,000	36"		•								
8000CLX	45,000	42"	•		•	•	•	•	•	•	•	•
8000CL	40,000	42"	•		•			•	•	•		•
8000C	35,000	42"						•				
8000 MODERN	32,000	42"		•								



BRICK REFRACTORY & ACCENT LIGHTING



PREMIUM LOGSET



LED ILLUMINATED EMBERS



REFLECTIVE BLACK GLASS INTERIOR

FRONT OPTIONS



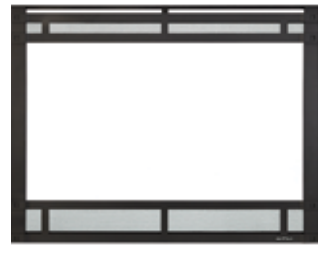
CHATEAU FORGE
Available for C/CL/CLX models in hand-crafted, hammered steel.



GALLERIA
Available for C/CL/CLX models in black, new bronze or graphite.



CHATEAU
Available for C/CL/CLX models in black, new bronze or graphite.



HALSTON
Available for C/CL/CLX models in black, new bronze or graphite.



ARCADIA
Available for C/CL/CLX models in black, new bronze or graphite.



CLEAN FACE
Available for C/CL/CLX models in black, new bronze or graphite.

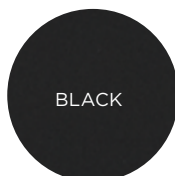


FOLIO
Available for C/CL/CLX and Modern models in black, new bronze or graphite.



MODERN
Available for Modern models in black or fog gray.

FINISHES



C/CL/CLX INTERIOR OPTIONS

Textured brick interiors add intricate detail and a traditional masonry appearance. Standard on CL and CLX models.



STRATFORD



TAHOE TAN

MODERN INTERIOR OPTIONS

Accent the firebox with glass. Four cool color options to warm up your flame.



CRYSTAL GLASS
(Standard)



EBONY GLASS



AMBER GLASS



COBALT GLASS

CONTROL OPTIONS



INTELLIFIRE PLUS RC300

A large LCD screen, intuitive menus and large icons. With flexibility to mount on the wall or use as a remote. Standard on CL and CLX models.



INTELLIFIRE PLUS RC200

Quick, convenient control. Mounted on the wall or as a remote.



INTELLIFIRE PLUS RC100

A subtle wall-mounted switch for instant ambiance.

6000 & 8000 TECHNOLOGIES



INTELLIFIRE PLUS IGNITION SYSTEM

An advanced intermittent pilot ignition system with memory settings and a programmable wireless RC300 remote control. IPI Plus constantly monitors ignition, ensures safe functioning and conserves up to \$10/month in energy costs.

**IntelliFire™
Plus**



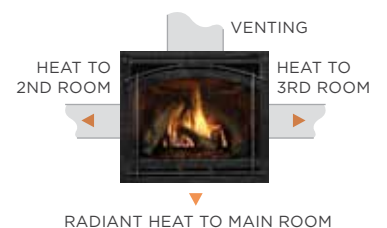
DIRECT VENT TECHNOLOGY

Direct Vent fireplaces remove 100% of combustion exhaust and odors outside of the home. These sealed fireplaces provide optimal heat, conserve energy and ensure clean, safe indoor air quality.



HEAT ZONE TECHNOLOGY

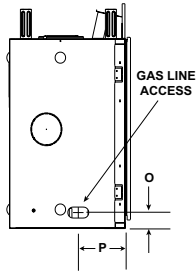
Draw heat from your fireplace into another room of the home, up to 20 feet away. When a heat zone kit is run continuously, it will redirect up to 25% of the fireplace's heat to another area, thus reducing wall temperatures above the fireplace. Two heat zones run continuously will redirect up to 50% of the fireplace's heat.



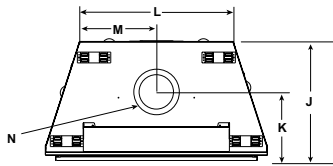
6000 & 8000 SPECIFICATIONS

MODEL	FRONT WIDTH		BACK WIDTH		HEIGHT		DEPTH		GLASS SIZE	BTU/HOUR INPUT (NG)
	UNIT	FRAMING	UNIT	FRAMING	UNIT	FRAMING	UNIT	FRAMING		
6000CLX, 6000CL, 6000C, 6000 MODERN	41 [1041]	42 [1067]	28-1/2 [724]	42 [1067]	39-7/8 [1013]	40-1/8 [1019]	21-1/2 [546]	22 [559]	32 x 21-1/2 [813 x 546]	CLX: 40,000 CL: 35,000 C: 30,000 MODERN: 28,000
8000CLX, 8000CL, 8000C, 8000 MODERN	48 [1219]	49 [1245]	35-1/2 [901]	49 [1245]	41-7/8 [1064]	42-1/8 [1070]	21-1/2 [546]	22 [559]	39 x 23-5/8 [991 x 600]	CLX: 45,000 CL: 40,000 C: 35,000 MODERN: 32,000

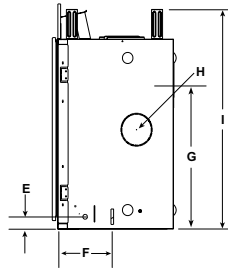
LEFT SIDE VIEW



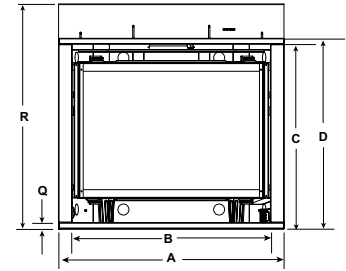
TOP VIEW



RIGHT SIDE VIEW



FRONT VIEW



MODEL	A	B	C	D	E	F	G	H	I	J	K	L	M	N	O	P	Q	R
6000C 6000CL 6000CLX	41 [1041]	36-1/8 [918]	33-1/2 [851]	34-5/8 [879]	2-1/4 [57]	9-11/16 [246]	26-7/8 [683]	6 [152]	39-7/8 [1013]	21 [533]	11-11/16 [297]	28-1/2 [724]	14-1/4 [362]	8-1/2 [216]	2-7/8 [73]	8-1/2 [216]	1 [25]	40-7/8 [1038]
6000 MODERN	41 [1041]	36-1/8 [918]	33-1/2 [851]	34-5/8 [879]	2-1/4 [57]	9-11/16 [246]	26-7/8 [683]	6 [152]	39-7/8 [1013]	21 [533]	11-11/16 [297]	28-1/2 [724]	14-1/4 [362]	8-1/2 [216]	2-7/8 [73]	8-1/2 [216]	1 [25]	40-7/8 [1038]
8000C 8000CL 8000CLX	48 [1219]	43-1/8 [1096]	35-1/2 [902]	36-5/8 [930]	2-3/8 [60]	9-15/16 [252]	28-7/8 [734]	6 [152]	41-7/8 [1064]	21 [533]	11-11/16 [297]	35-1/2 [901]	17-3/4 [451]	8-1/2 [216]	2-7/8 [73]	8-1/2 [216]	1 [25]	42-7/8 [1089]
8000 MODERN	48 [1219]	43-1/8 [1096]	35-1/2 [902]	36-5/8 [930]	2-3/8 [60]	9-15/16 [252]	28-7/8 [734]	6 [152]	41-7/8 [1064]	21 [533]	11-11/16 [297]	35-1/2 [901]	17-3/4 [451]	8-1/2 [216]	2-7/8 [73]	8-1/2 [216]	1 [25]	42-7/8 [1089]

Dimensions are in inches and millimeters. Product information is not complete and is subject to change without notice. Product installation must adhere strictly to instructions shipped with product. We recommend measuring individual units at installation. Assumes the use of 1/2" sheetrock. NOTE: Combustible material should not cover the face. Make sure you do NOT cover the decorative door opening.

Refer to installation manual for detailed specifications on installing this product. Heat & Glo® reserves the right to update units periodically. The flame and ember appearance may vary based on the type of fuel burned and the venting configuration used. Actual product appearance, including flame, may differ from product images.

U.S. EFFICIENCIES

Steady State - Since most homeowners use their fireplaces for an extended time while they are in the room, Steady State measures how efficiently your fireplace converts fuel to heat once it is warmed up and running in a “steady state”.

AFUE - AFUE rating is more typically used with appliances, like your furnace, that continually cycle on and off to maintain a constant temperature.

RATING	6000 CLX	6000 CL	6000 C	8000 CLX	8000 CL	8000 C	6000 MODERN	8000 MODERN
STEADY STATE	83% (NG)	82% (NG)	81% (NG)	84% (NG)	83% (NG)	83% (NG)	79% (NG)	78% (NG)
AFUE	65% (NG)	64% (NG)	60% (NG)	66% (NG)	62% (NG)	63% (NG)	61% (NG)	56% (NG)

CANADA EFFICIENCIES

EnerGuide (CSA P.4.1-02) - EnerGuide is a rating used in Canada to measure annual fireplace efficiency.




RATING	6000 CLX	6000 CL	6000 C	8000 CLX	8000 CL	8000 C	6000 MODERN	8000 MODERN
ENERGUIDE (CSA P.4.1-02)	67% (NG)	68% (NG)	64% (NG)	68% (NG)	65% (NG)	67% (NG)	63% (NG)	62% (NG)

For complete information on this model,
please contact us at:

HEAT & GLO®

No one builds a better fire

Web: heatnglo.com
Phone: (888) 427-3973 (952) 985-6000
E-mail: info@heatnglo.com

 facebook.com/HeatandGlo
 twitter.com/HeatandGlo
 youtube.com/HeatandGlo

HNG-1137U-0915

LIMITED LIFETIME WARRANTY*

The strongest in the industry, Heat & Glo® provides a limited lifetime warranty on the most important aspects: firebox and heat exchanger.

*For full warranty details, go to www.heatnglo.com.
Fireplace glass and other surfaces get extremely HOT and can cause severe burns if touched. Do not remove the protective safety screen from the front of the glass. Keep a safe distance away. To learn more visit www.heatnglo.com/fireplacesafety

